



SB20 MIDLAND CHAMPIONSHIPS 2025

LOUGH REE YACHT CLUB

Saturday 17th - 18th May 2025

The Organising Authority (OA) is

LOUGH REE YACHT CLUB (LRYC)

IN CONJUNCTION WITH THE SB20 IRELAND CLASS ASSOCIATION (SB20s)

BALLYGLASS, COOSAN, ATHLONE, CO WESTMEATH N37 K257

The notation '[DP]' at the beginning of a rule means that that rule is subject to a discretionary penalty.

The notation '[NP]' at the beginning of a rule means that that rule shall not be grounds for protests by a boat.

This changes RRS 60.1(a).

NOTICE OF RACE (NoR)



1 RULES

- 1.1 The event is governed by the *rules* as defined in *The Racing Rules of Sailing (RRS)*.
- 1.2 Class rule C.5.1(7(i)) will not apply (petrol outboard engine) and is replaced with "Two paddles of combined minimum weight not less than 1kg." This weight requirement will be strictly policed. Added weight will not be treated as part of the paddle.
- 1.3 All boats must comply with the safety prescriptions set out in the Class Rules.

2 SAILING INSTRUCTIONS (SIs)

- 2.1 The SIs will be available no later than 21:00 on Friday 16th May 2025 at Registration and may also be available online before then [HERE](#) before then -
(See COMMUNICATIONS below.)

3 COMMUNICATIONS

- 3.1 The official notice board is located in the Notice Window, at the front of the clubhouse.
- 3.2 Copies of notices may also be published on the event WhatsApp Group which can be joined by using the link [HERE](#) or by scanning the Event QR code. Failure to post such information on WhatsApp shall not be grounds for redress. This changes *RRS* 61.4(b).
- 3.3 [DP] All boats shall carry a working VHF radio.
- 3.4 [NP] On the water, the race committee may make courtesy or safety broadcasts to competitors on VHF radio. The channel will be stated in the SIs.
- 3.5 [DP] From the first warning signal until the end of the last race of the day, a boat shall not make voice or data transmissions and shall not receive voice or data communications that are not available to all boats. This includes use of mobile phones.
An exemption to this rule applies for communications with the event coach/es.



4 ELIGIBILITY AND ENTRY

- 4.1 The event is open to registered boats of the SB20 class. One crew member on board must be a member of the SB20 Ireland Class Association.
- 4.2 During registration evidence may be required that the boat complies with Class membership requirements.
- 4.3 Parent/Guardian Declarations: At registration, all helms and crews who are under 18 years of age must submit declarations signed by their parent or guardian.
Forms available at registration or [HERE](#).
- 4.4 Entrants may be required to sign a declaration of compliance with all Class Rules and eligibility criteria.



5 FEES

5.1 Entries will be accepted until Saturday 17th May with an early entry discount applicable as below. The entry fee includes launching, berthing and lift out of visiting boats and is non-refundable.

	EARLY ENTRY DISCOUNT €25.00 On or before Wednesday 23 rd April	LATE ENTRY Up to Saturday 17 th May
Entry Fee	€120.00	€145.00
Entirely Crewed by Under 30s	€75.00	€100.00

5.2 Online entry is available [**HERE**](#).

5.3 Entries are accepted at the sole discretion of the OA.

6 CREW LIMITATIONS

6.1 Helms and crews shall not be changed during the event without prior permission of the Race Committee.

7 ADVERTISING

7.1 Boats may be required to display advertising chosen and supplied by the OA.

8 QUALIFYING SERIES AND FINAL SERIES - *Not Used*.

9 SCHEDULE

Date	Registration & Lift In / Out	Briefing / Prizegiving (in front of clubhouse)	First Warning Signal	Number of Races
Fri 16 th May	19:00 - 20:00			
Sat 17 th May	08:30 - 11.15	11.15	12:55	Up to 6
Sun 18 th May	Immediately After Racing	A.S.A.P. After Visitors Lift Out	10:55	Sufficient to complete Series (Up to Maximum 6)



9.1 10 races are scheduled as above.

9.2 With the exception of the first scheduled race, which will not be brought forward, the race committee reserves the right to alter the schedule of races for any reason it sees fit.

9.3 [NP] The Target time for races will be approximately 35 minutes.

9.4 [NP] The Time Limit for each race will be 60 minutes.

9.5 On the last scheduled day of racing no warning signal will be made after 14:30 except after postponements and general recalls of a race where the first warning signal was made at or before 14:30.

10 EQUIPMENT INSPECTION

10.1 Each boat may be requested to produce or verify the existence of a valid measurement certificate upon request.

10.2 [DP] Boats shall be available for equipment inspection upon request.

10.3 Boats may be inspected at any time.

11 CLOTHING & EQUIPMENT

11.1 *RRS 40.1*, Personal Flotation Devices always applies at all times when afloat except briefly while changing or adjusting clothing or personal equipment. Wetsuits and drysuits are not adequate for personal buoyancy.

12 VENUE

12.1 NoR Addendum A shows an aerial view of part of the LRYC premises.

13 COURSES

13.1 NoR Addendum B shows a chart of the intended racing area.

13.2 The courses will be of the Windward / Leeward type with further exact details specified in the SIs.

14 PENALTY SYSTEM

14.1 *RRS Appendix T* (Arbitration) may be used. If used and if a party is not present at an arbitration meeting, any party that is present may take a Post-Race Penalty as defined in *RRS T1(b)* at any time until the Protest Committee has completed taking evidence. This changes *RRS T1 (a)*.

14.2 Other penalties will be as described in the SIs.

15 SCORING

15.1 Three races are required to complete the series.

15.2 When fewer than four races have been completed, a boat's series score will be the total of her race scores.

15.3 When four or more races have been completed, a boat's series score will be the total of her race scores excluding her worst score.



16 SUPPORT PERSON VESSELS (SPVS)

- 16.1 [DP] SPVs shall register at the Race Office during the registration period.
- 16.2 [DP] During racing **SPVs shall not create a wake** and shall remain more than 100 metres from the course area, except when asked to assist by the Race Committee.

17 CHARTERED OR LOANED BOATS

- 17.1 A chartered or loaned boat may carry national letters or a sail number in contravention of her class rules, provided that the race committee has approved her sail identification before the first race. See RRS G3

18 BERTHING

- 18.1 To keep the crane area clear, boats will be asked to rig either behind the clubhouse or on the concrete pad immediately north of the clubhouse.
- 18.2 Launching and berthing are included in the entry fee and will take place as set out in NoR 9 above.
- 18.3 In addition to the scheduled crane in times, competitors are free to launch/recover their boats using the club's slip at any time.
- 18.4 Trailers will need to be moved to the south field immediately after launch.
- 18.5 All launched boats must be berthed overnight on Friday 16th and Saturday 17th of the event on LRYC pontoons or moorings. Competitors are advised to bring adequate warps and fenders.

19 HAUL-OUT RESTRICTIONS

- 19.1 Boats shall not be hauled out during the event unless, having requested to do so in writing, the request is granted by the race committee.
- 19.2 Lift-out facilities for visiting boats will be provided immediately after racing on Sunday.

20 DIVING EQUIPMENT AND PLASTIC POOLS - *Not Used.*

21 DATA PROTECTION

- 21.1 Any personal information provided to the OA will be used to facilitate participation in the Event. Competitors and support persons are bound by the RRS (the rules), the legal basis for processing that personal information is contract. For any person not bound by the rules, the legal basis for processing that personal information is legitimate interest. Personal information will be stored and used in accordance with the OA's privacy policy. When required by the rules, personal information may be shared with Irish Sailing, a competitor's or support person's national authority and/or World Sailing. The results of the Event and the outcome of any hearing or appeal may be published.



Competitors and support persons accept that the OA may arrange for images or videos to be taken at the Event both on the water and on shore. Competitors and support persons give consent to the taking of such images and to the use, reuse, publication and republication of such images in any media, in conjunction with the competitor's name or not, without compensation and without the competitor's approval of such images or any use thereof. The images may only be used for the promotion of the Event, its sponsors, the OA and the Class associations.

21.2 The OA will use personal data to administer the event.

22 RISK STATEMENT

22.1 *RRS 3 of the Racing Rules of Sailing states: 'The responsibility for a boat's decision to participate in a race or to continue racing is hers alone.'*

Sailing is by its nature an unpredictable sport and therefore inherently involves an element of risk. By taking part in the event, each competitor agrees and acknowledges that:

- (a) They are aware of the inherent element of risk involved in the sport and accept responsibility for the exposure of themselves, their crew and their boat to such inherent risk whilst taking part in the event;*
- (b) They are responsible for the safety of themselves, their crew, their boat and their other property whether afloat or ashore;*
- (c) They accept responsibility for any injury, damage or loss to the extent caused by their own actions or omissions;*
- (d) Their boat is in good order, equipped to sail in the event and they are fit to participate;*
- (e) The provision of a race management team, patrol boats and other officials and volunteers by the event organiser does not relieve them of their own responsibilities;*
- (f) The provision of patrol boat cover is limited to such assistance, particularly in extreme weather conditions, as can be practically provided in the circumstances;*
- (g) It is their responsibility to familiarise themselves with any risks specific to this venue or this event drawn to their attention in any rules and information produced for the venue or event and to attend any safety briefings.*

22.2 LRYC and SB20 Ireland, together with their officers, members and volunteers, will not accept liability for the loss of life or property, or personal injury, or damage caused by or arising out of the SB20 Midland Championship 2025, including any pre-championship training at the championship site, and competitors take part in the championship entirely at their own risk.

22.3 The establishment of the NoR and the SIs and any other event notices, in no way limits or reduces the complete and unlimited responsibilities of competitors being solely and entirely responsible for the management of a boat they are sailing. Participating in a race or to continue racing is the responsibility of each competitor
(See RRS 3 in NoR 22.1).



23 INSURANCE

- 23.1 Each participating boat shall be insured with valid and adequate insurance against any risk, including civil responsibility to third parties for the entire event. Certificate of insurance may be required at registration.
- 23.2 Certificate of insurance may be required at registration.
- 23.3 By completing the entry form all Owners / Competitors are deemed to have declared that they hold such cover.
- 23.4 Owners / competitors not holding such cover shall withdraw their entry.

24 PRIZES

- 24.1 Prizes will be given for First, Second and Third Overall and to the top boat in the Silver Fleet.
- 24.2 Other prizes may be awarded at the discretion of the OA.

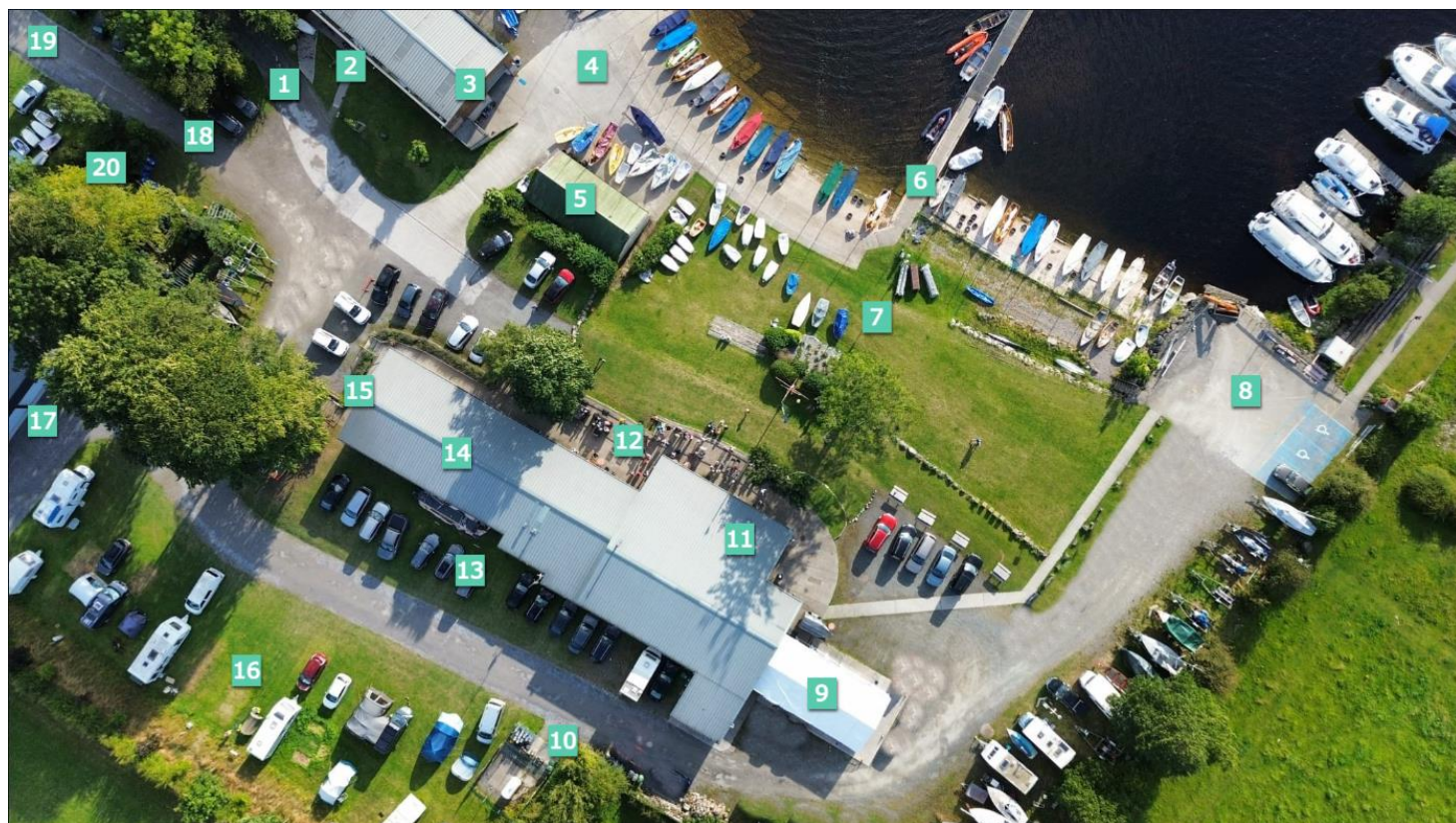
25 FURTHER INFORMATION

- 25.1 Visiting helm and crews, together with their guests competing in the event, are granted Temporary Membership of LRYC for the duration of the event, subject only to the provisions of the Club rules for withdrawing or withholding such membership.
- 25.2 For further information, please contact
Kevin Fenton, Event Co-Ordinator - kevin@glassonfarm.com

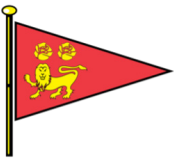


ADDENDUM A

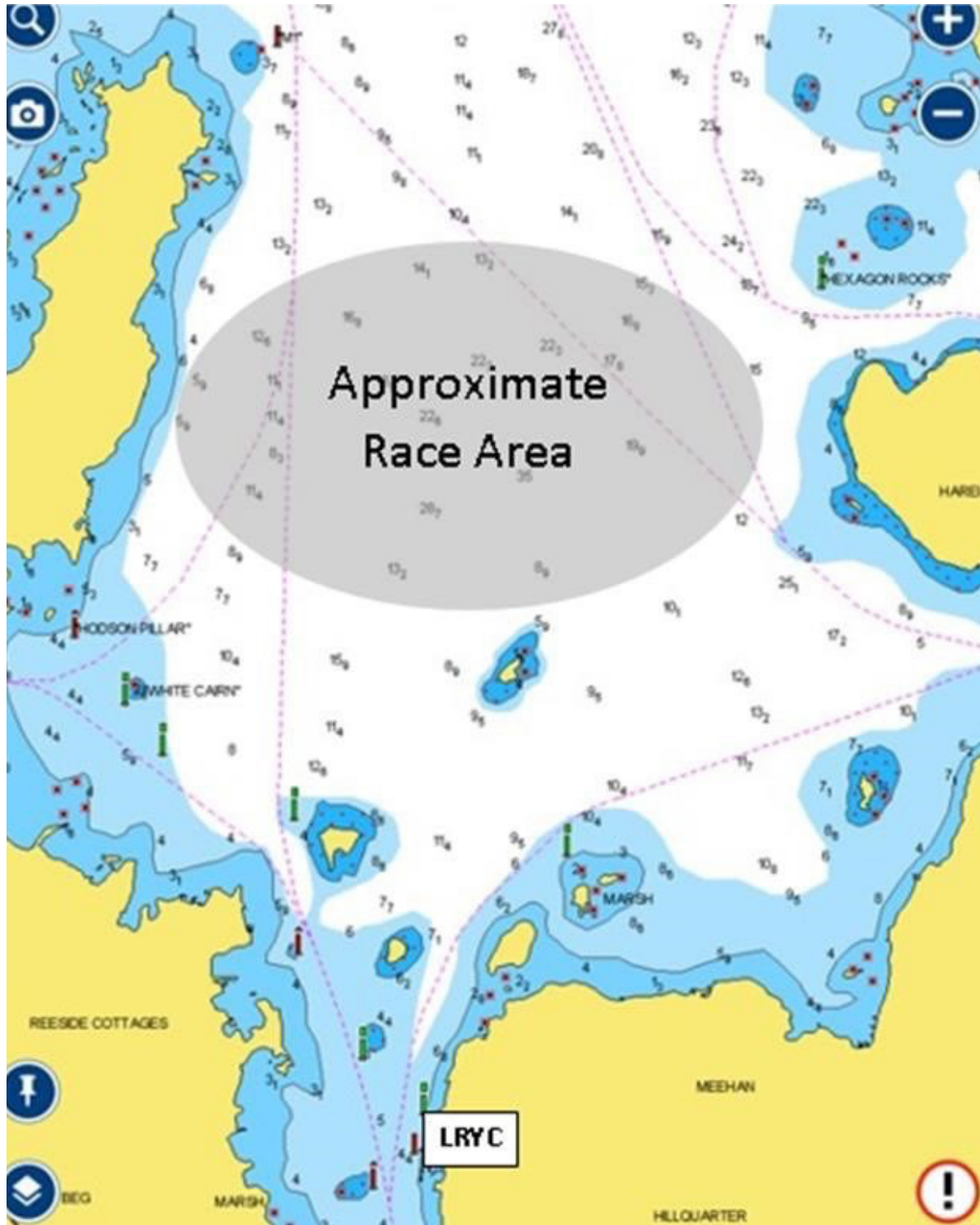
Lough Ree Yacht Club – Site Map



- | | | | |
|----------------------------|----------------------------|--|---------------------------------|
| 1. Entrance (one way) | 2. Junior Room | 3. Boat House 2 (Rescue) | 4. Slipway / Launch |
| 5. Boathouse 1 (Optimists) | 6. ESB Jetty | 7. Rigging Area | 8. Crane/Set down area for Jett |
| 9. Marquee Area | 10. Glass Recycling | 11. Bar (Clubhouse) | 12. Veranda |
| 13. Car Parking | 14. Ladies & Gents Showers | 15. Camping Kitchen and Showers | 16. Campsite (Power Points) |
| 17. Boat House 3 | 18. Exit (one way) | 19. South Field (car/trailer parking, camping) | 20. Recycling and General Waste |



ADDENDUM B



END OF NOTICE OF RACE



ACCOMMODATION

Competitors are welcome to camp on the LRYC grounds for the duration of the event.
Parking for Camper Vans, Tents etc. with shower facilities available.

Weekend camping charge of €25.00 applies and can be booked [HERE](#).

CATERING

Saturday Evening 16th

An evening meal will be available.

Menu TBC - Vegetarian Option available

Price €25

It will be necessary to book [HERE](#) in advance as places are limited.
Final booking for meals to be received no later than **Monday 12th of May**.

The Club Bar will be open on Saturday.