



**THE IRISH INTERNATIONAL 420 ASSOCIATION  
2025 ULSTER CHAMPIONSHIP  
AND  
THE IRISH FIREBALL CLASS ASSOCIATION  
OPEN CHAMPIONSHIP**

**April 5<sup>th</sup> & 6<sup>th</sup> 2025**

The Organising Authority (OA) is  
**LOUGH REE YACHT CLUB (LRYC)**

***IN ASSOCIATION WITH THE IRISH INTERNATIONAL 420 ASSOCIATION (420)  
AND THE IRISH FIREBALL CLASS ASSOCIATION (FIREBALL)***

**BALLYGLASS, COOSAN, ATHLONE, CO WESTMEATH N37 K257**

---

**REGISTRATION** on Saturday 5<sup>th</sup> in the clubhouse starting at 09:30 followed by  
**BRIEFING** on the veranda outside the clubhouse at 10:30

---

*The notation '[NP]' in a rule means that a boat may not protest another boat for breaking that rule.  
This changes RRS 60.1(a).*

*The notation '[DP]' in a rule means that the rule is subject to a discretionary penalty.*

**SAILING INSTRUCTIONS (SIS)**

---



## 1 RULES

1.1 The event is governed by the *rules* as defined in *The Racing Rules of Sailing (RRS)*.

## 2 CHANGES TO SAILING INSTRUCTIONS

2.1 Any change to the SIs will be posted not later than two hours prior to the scheduled start of the first race on the day it will take effect, except that any change to the schedule of races will be posted by 21:00 on the day before it will take effect.

## 3 COMMUNICATIONS WITH COMPETITORS

3.1 Notices will be posted on the Notice Window situated at the front of the clubhouse and may also be published on the event WhatsApp Group which can be joined by using the link <https://chat.whatsapp.com/EWyRU2V3PDqEyhGMGCARxd> or by scanning the Event QR code.



3.2 [DP] While racing, except in an emergency, a boat shall not make voice or data transmissions and shall not receive voice or data communication that is not available to all boats.  
This also applies to mobile phones.

## 4 CODE OF CONDUCT

4.1 [DP] Competitors and support persons shall comply with reasonable requests from race officials.

## 5 SIGNALS MADE ASHORE

5.1 Signals made ashore will be displayed on the flagstaff in front of the clubhouse.

5.2 Except in a starting sequence, when Code Flag AP is displayed ashore, '1 minute' is replaced with "not less than 30 minutes." This changes to *RRS Race Signals* AP.

## 6 SCHEDULE OF RACES

6.1

Date	Time	
Saturday 5 <sup>th</sup> April	11:55	1 <sup>st</sup> Warning Signal
Sunday 6 <sup>th</sup> April	09:55	1 <sup>st</sup> Warning Signal

## 7 CLASS FLAGS

7.1 The Fireball Class Flag will be International Code Flag Numeral 8.

7.2 The 420 Class Flag will be International 420 Class Flag.



## 8 RACING AREA

8.1 The racing area will be approximately as shown in SI ADDENDUM A.

## 9 COURSES

9.1 Courses which may be used are shown in SI ADDENDUM B.

## 10 MARKS

10.1 Marks which may be used are shown in SI ADDENDUM B.

10.2 The Starting Line Distance Mark, if not a RIB as described in SI 12, will be a White Spherical Buoy.

The Course Marks will be Red Tetrahedral, Yellow Spherical and Yellow Cylindrical Buoys.  
The Finishing Line Distance Mark will be a Black Spherical Buoy.

## 11 OBSTRUCTIONS - *Not Used.*

## 12 THE START

12.1 To alert boats that a race or sequence of races will begin soon and the Committee Vessel is on station, the orange starting line flag may be displayed, with one sound signal, at least 1 minute before a warning signal is made.

12.2 The Starting Line is between a mast or staff displaying an Orange Flag on the Committee Vessel at the starboard end and the course side of the port-end starting mark, which will be a staff flying an Orange Flag in a RIB or a White Spherical Mark.

12.3 [DP] Boats, whose warning signal has not been made, shall avoid the starting area during the starting sequence for other races.

12.4 A boat that does not start within 4 minutes after her starting signal will be scored DNS without a hearing. This changes RRS 35 and A5.

## 13 CHANGE OF THE NEXT LEG OF THE COURSE

13.1 To change the next leg of the course, the race committee may move the original mark or the finishing line to a new position, OR may lay a new mark and remove the original mark as soon as is practicable.

The newly laid mark may be a different Shape and/or Colour.

13.2 When signalling a change to the next leg of the course, the race committee may not display the new direction or length of the course. This changes RRS 33.

13.3 When a race committee vessel displays Code Flag F at a mark or gate and makes repeated sound signals, boats shall pass between the vessel displaying Flag F and the nearby mark, leaving the mark on the required side, or passing through the gate, and then sail to the Committee Vessel finish line, crossing the finish line from the course side. This changes RRS 32.2 and 33.



## 14 THE FINISH

- 14.1 The finishing line will be between a mast or staff displaying a blue flag, on a Committee Vessel, and a Black Spherical Buoy.
- 14.2 Unless they are finishing, boats shall not sail through the finishing line while the Blue Flag is displayed on the Committee vessel. Boats breaking this rule will be awarded a 20% penalty without a hearing. This changes *RRS* 35 and A5.
- 14.3 When the race committee signals to a boat that is still racing by displaying flag W with one sound signal:
- The boat is no longer required to sail the course (this changes *RRS* 28.1).
- The boat shall no longer continue in the race, and shall return to the starting area, or return ashore if there is no more racing;
- and**
- The race committee shall, without a hearing, score the boat points determined by her place in the race as recorded at the time of signalling by the race committee vessel. This changes *RRS* A5.
- [NP]. This changes *RRS* 35, 60.1(b) and 62.1(a) & Appendix A4.
- 14.4 [NP] When flag W is being applied, the race committee will keep everything open until process is complete. This changes SI 16.1.

## 15 PENALTY SYSTEM - *Not Used.*

## 16 TIME LIMITS AND TARGET TIMES

- 16.1 [NP] The Race Time Limit will be 60 minutes.  
The Finishing Window will be 20 minutes.
- 16.2 In each Class, The Finish Window is the time for boats to finish after the first boat sails the course. Boats failing to finish within the Finishing Window and not subsequently retiring, penalised, or given redress, will be scored DNF without a hearing. This changes *RRS* 35 and *RRS* A5.1, A5.2 and A10.

## 17 HEARING REQUESTS

- 17.1 For each class, the protest time limit is 60 minutes after the last boat has finished the last race of the day.
- 17.2 A boat intending to protest or seek redress for an incident in the race area shall, as soon as reasonably possible after finishing, inform the finishing vessel and receive acknowledgement or, if she does not finish, shall notify the Race Office, as soon as reasonably possible after coming ashore. This changes *RRS* 60.2 & 61.2.
- 17.3 Hearing request forms are available from the Race Office in the clubhouse.
- 17.4 Notices will be posted as soon as is practicable after the Protest Time Limit to inform competitors of hearings in which they are parties or named as witnesses. Hearings will be held in the Committee Room in the clubhouse.



17.5 Arbitration - Appendix T may apply.

17.6 On the last scheduled day of racing, a request for reopening a hearing shall be delivered:

- (a) no later than 10:00 if the requesting party was informed of the decision on the previous day;
- (b) no later than 30 minutes after the requesting party was informed of the decision on that day.

This changes RRS 63.7(b)1.

## **18 SCORING - Not Used.**

## **19 SAFETY REGULATIONS**

19.1 Rule 40 applies at all times when afloat (Lifejackets or other adequate personal buoyancy shall be worn by all competitors at all times while afloat).

19.2 A boat, which retires from a race, shall make every effort to inform an official vessel as soon as possible.

## **20 REPLACEMENT OF CREW AND EQUIPMENT**

20.1 [DP] Substitution of damaged or lost equipment is not allowed unless authorised in writing by the race committee. Requests for substitution shall be made to the committee at the first reasonable opportunity, which may be after the race.

## **21 EQUIPMENT AND MEASUREMENT CHECKS**

21.1 A boat or equipment may be inspected at any time for compliance with the Class Rules, Notice of Race and SIs.

## **22 SUPPLIED BOATS - Not Used.**

## **23 OFFICIAL VESSELS - Not Used.**

## **24 [DP] SUPPORT TEAMS & SUPPORT VESSELS (SPVS)**

24.1 [DP] During racing, SPVs shall not create a wake and shall remain more than 100 metres from the course area, except when asked to assist by the race committee.

## **25 TRASH DISPOSAL**

25.1 Trash may be placed aboard official vessels.

## **26 BERTHING - Not Used.**



## 27 HAUL-OUT RESTRICTIONS - *Not Used.*

## 28 DIVING EQUIPMENT AND PLASTIC POOLS - *Not Used.*

## 29 PRIZES

29.1 Prizes are detailed in the NoR.

29.2 Prizegiving will be in /outside the clubhouse after racing on completion of the event.

## 30 RISK STATEMENT

30.1 RRS 3 states: 'The responsibility for a boat's decision to participate in a race or to continue to race is hers alone.' By participating in this event each competitor agrees and acknowledges that sailing is a potentially dangerous activity with inherent risks. These risks include strong winds and rough seas, sudden changes in weather, failure of equipment, boat handling errors, poor seamanship by other boats, loss of balance on an unstable platform and fatigue resulting in increased risk of injury. Inherent in the sport of sailing is the risk of permanent, catastrophic injury or death by drowning, trauma, hypothermia or other causes.

30.2 It is the Competitor's decision to enter the Event or to start in any race. Competitors shall accept that their participation in the Regatta is at their sole, exclusive risk, in every respect. By way of entry to the Regatta, competitors shall indemnify LRYC and Associated Class Associations, their officers, members, servants and agents in respect of all claims and demands of whatever nature which may be made upon them in connection with or howsoever arising from their participation or intended participation in the events.

Competitors shall acknowledge that LRYC and Associated Class Associations, their officers, members, servants and agents accept no responsibility in respect of loss of life, personal injury or loss or damage to property which may be sustained by reason of their participation or intended participation in the events or howsoever arising in connection with these events.

## 31 INSURANCE

31.1 Each participating boat shall be insured with valid third-party liability insurance with a minimum cover of €3 million per incident or the equivalent.

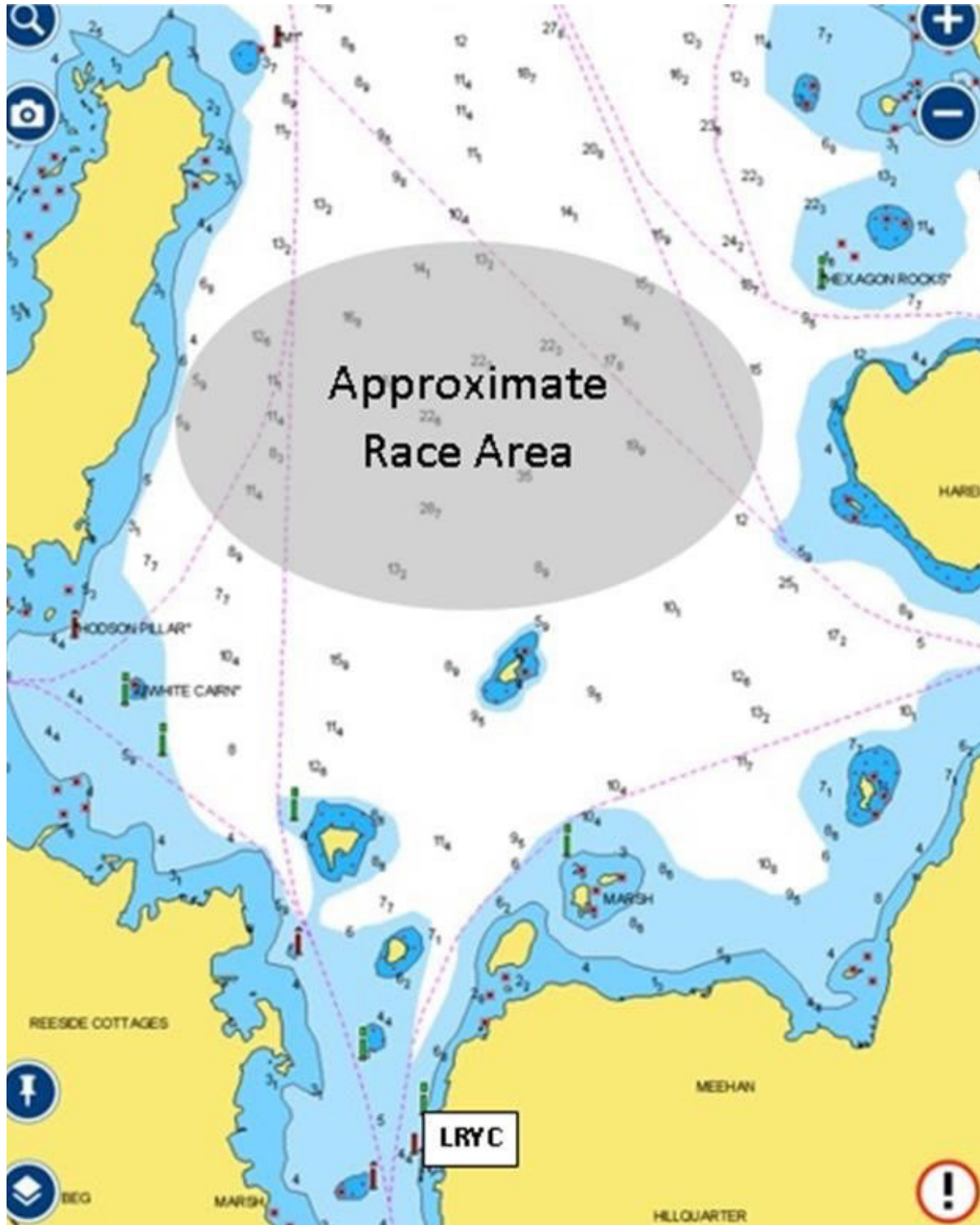
31.2 Certificate of insurance may be requested..

31.3 By completing the entry form, all Owners / Competitors are deemed to have declared that they hold such cover.

31.4 The organising authority will reject any entry of a boat not complying with S1 31.1. (See RRS 70.5).



## ADDENDUM A LOCATION OF RACING AREA







## ADDENDUM B

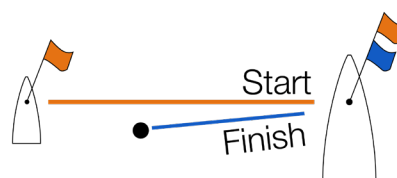
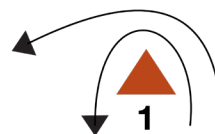
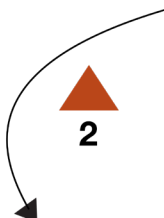
### COURSE 1

Course Flag – Code Flag “T” 

All marks to be rounded to port.

Fireballs START - 1 - 2 - 3 - 1 - 3 - 1 - 2 - 3 - FINISH

420's START - 1 - 2 - 3 - 1 - 3 - FINISH



NOT TO SCALE





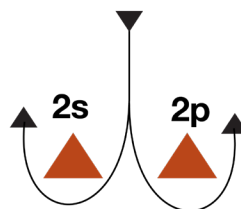
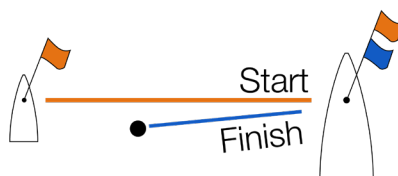
## COURSE 2

Course Flag – Code Flag “Q”



All marks to be rounded to port except 2s, which is to be rounded to starboard.

Fireballs      START - 1 - 1a - 2s/2p - 1 - 1a - 2s/2p - 1 - 1a - 2s/2p - FINISH  
420's          START - 1 - 1a - 2s/2p - 1 - 1a - 2s/2p - FINISH



NOT TO SCALE



## COURSE 3

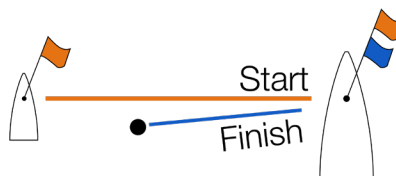
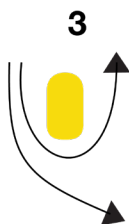
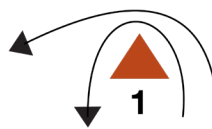
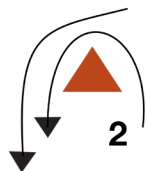
Course Flag – Code Flag “K”



All marks to be rounded to port.

Fireballs START - 1 - 4 - 1 - 4 - 1 - 2 - 3 - 4 - FINISH

420's START - 1 - 2 - 3 - 2 - 3 - 4 - FINISH



NOT TO SCALE