



SB20 MIDLAND CHAMPIONSHIPS 2025

Saturday 17th - 18th May 2025

The Organising Authority (OA) is

LOUGH REE YACHT CLUB (LRYC)

IN CONJUNCTION WITH THE SB20 IRELAND CLASS ASSOCIATION (SB20s)

BALLYGLASS, COOSAN, ATHLONE, CO WESTMEATH N37 K257

REGISTRATION will take place in the clubhouse

Friday 16th 19:00 to 20:00 | Saturday 17th 08:30 to 11:15

COMPETITORS BRIEFING will take place outside the clubhouse
on Saturday 17th at 11:15

The notation '[NP]' in a rule means that a boat may not protest another boat for breaking that rule.

This changes RRS 60.1.

The notation '[DP]' in a rule means that the rule is subject to a discretionary penalty.

SAILING INSTRUCTIONS (SIs)



1 RULES

- 1.1 The event is governed by the *rules* as defined in *The Racing Rules of Sailing (RRS)*.
- 1.2 RRS 40.1 Personal Flotation Devices (PFDs) applies. **"Each competitor shall wear a PFD except briefly while changing or adjusting clothing or personal equipment. Wet suits and dry suits are not PFDs".**

2 CHANGES TO SAILING INSTRUCTIONS

- 2.1 Any change to the schedule of races will be posted by 20:00 on the day before it will take effect.

3 COMMUNICATIONS WITH COMPETITORS

- 3.1 Notices to competitors will be posted on The Official Notice Board which is located in the notice window at the front of the LRYC clubhouse.
- 3.2 [NP] Copies of notices may also be published on the event WhatsApp Group "SB20 Midland Championships" which can be joined by using the link **HERE** or by scanning the Event QR code.
Failure to post such information on WhatsApp shall not be grounds for redress. This changes RRS 61.4(b).
- 3.3 The Race Office is located at the Committee Room in the LRYC clubhouse.
- 3.4 [DP] All boats shall carry a VHF radio capable of communicating on VHF marine channels.
- 3.5 [NP] On the water, the race committee will make courtesy broadcasts to competitors on VHF radio channel 77.
- 3.6 [DP] While racing, except in an emergency, a boat shall not make voice or data transmissions and shall not receive voice or data communication that is not available to all boats. This also applies to mobile phones which may be carried onboard.
This changes Class Rule C4.2 (1).



4 CODE OF CONDUCT

- 4.1 [DP] Competitors and support persons shall comply with reasonable requests from race officials.

5 SIGNALS MADE ASHORE

- 5.1 Signals made ashore will be displayed from the flag pole in front of the LRYC Clubhouse.
- 5.2 When flag 'AP' is displayed ashore, '1 minute' is replaced with 'not less than 60 minutes'.
This changes RRS Race Signals.



6 SCHEDULE

6.1

Date	Race Office Open & Lift In / Out	Briefing / Prizegiving (in front of clubhouse)	First Warning Signal	Number of Races
Fri 16 th May	19:00 - 20:00			
Sat 17 th May	08:30 - 11.15	11.15	12:55	Up to 6 Races (Back to Back)
Sun 18 th May	ASAP after Last Race	ASAP after Vistors Priority Lift Out & Results become Available	10:55	Sufficient to complete Series (Back to Back) Maximum 6

6.2 Ten (10) races are scheduled with succeeding races being started as soon as is practicable after the finish of the previous race.

6.3 To alert boats that a race or sequence of races will begin soon, the orange starting line flag will be displayed with one sound signal at least five minutes before a warning signal is made.

6.4 Additional races may be sailed on Saturday 17th. If the race committee intends to start an additional race THE ORANGE FLAG will be displayed at the finish of the previous race.

6.5 On the last scheduled day of racing the first warning signal of a race will not be made after 14:30.

7 CLASS FLAGS

7.1 The class flag will be the SB20 Class Flag.

8 RACING AREA

8.1 The racing area will be on the waters of Lough Ree as shown approximately in **Addendum A**.

9 COURSES

9.1 The course diagram in **Addendum B**, shows the course, the order in which the marks are to be passed and the side on which each mark is to be left.

9.2 If, for any reason, a gate is missing the remaining mark shall be rounded to port.
This changes RRS 34.

10 MARKS

10.1 Marks 1, 2s & 2p will be Red/Orange Tetrahedral Marks.

10.2 Mark 1a will be a Yellow Spherical Buoy.

10.3 For the start see SI 12.1, for the finish see SI 14.1.

11 OBSTRUCTIONS - Not Used.



12 THE START

- 12.1 The Starting Line will be between,
the **MIZZEN MAST** displaying an Orange Flag on a race committee vessel
and the course side of the starting mark, being:
EITHER a STAFF displaying an Orange Flag in a RIB,
OR a White Spherical Buoy.
- 12.2 [NP] When *RRS* 29.1 applies, if any part of a boat's hull is on the course side of the starting line at her starting signal and she is identified, the race committee will attempt to hail, by VHF, her sail number. Failure to hail her number, delay in hailing her number, failure of her to hear such a hail, or the order in which boats are hailed will not be grounds for a request for redress.
This changes *RRS* 61.1(a).
- 12.3 A boat that does not start within 4 minutes after her starting signal shall be scored as Did Not Start (DNS) without a hearing. This changes *RRS* A5.1 and A5.2.

13 CHANGE OF THE NEXT LEG OF THE COURSE

- 13.1 To change the next leg of the course, the race committee will move the original mark (and/or the finishing line) to a new position. To indicate that a mark has been changed to Port a Red flag will be used OR for a change to Starboard a Green flag will be used. Flag 'C' will not be used. No course bearing will be indicated. This changes *RRS* 33.
- 13.2 Minor adjustments will not be signalled. This changes *RRS* 33.
- 13.3 Except at a gate, boats shall pass between a race committee vessel signalling the change of the next leg and the nearby mark, leaving the mark to port and the race committee vessel to starboard. This changes *RRS* 28.1.
- 13.4 When, at a mark or gate, a race committee vessel displays flag 'F' with repeated sound signals, boats shall EITHER pass between the vessel displaying flag 'F' and the nearby mark, OR pass through the gate, and then sail to the finish line to finish.
This changes *RRS* 32.2 and 33.

14 THE FINISH

- 14.1 The Finishing Line will be between,
the **MAIN MAST** displaying a Blue Flag on a race committee vessel
and the course side of the finishing mark,
being a Black Spherical Buoy.
- 14.2 "When the race committee signals to a boat that is still racing by displaying flag 'W' with one sound signal: The boat is no longer required to sail the course. The boat shall no longer continue in the race, and shall return to the starting area, or return ashore if there is no more racing; The race committee shall, without a hearing, score the boat points determined by her place in the race when she is signalled. However, when two or more boats that are overlapped are notified, they will be scored as if they were tied.
This changes *RRS* 28.1, 35, 61.1(a), 61.2(b)(1) and A5."
- 14.3 [NP] When flag 'W' is being applied, the race committee will extend the Race Time Limit until the process is complete. This changes SI 16.2.



15 PENALTY SYSTEM

15.1 The Two-Turn penalty is changed to a One-Turn penalty. This changes *RRS* 44.1 and P2.

16 TIME LIMITS AND TARGET TIMES

16.1 The Target Time for each race is 35 minutes. Failure by the race committee to meet the Target Time will not be grounds for redress. This changes *RRS* 61.1.

16.2 The Race Time Limit for each race is 60 minutes.

16.3 The Finishing Window is 15 minutes. Boats failing to finish within the Finishing Window, and not subsequently retiring, penalised or given redress, will be scored Did Not Finish (DNF), without a hearing. This changes *RRS* 35, A5.1 and A5.2.

17 HEARING REQUESTS

17.1 The Protest Time Limit is 60 minutes after the last boat finishes the last race of the day or the race committee signals no more racing today, whichever is later. The time will be posted on the Notice Board.

17.2 Hearing Request Forms are available at the Race Office and completed requests must include a mobile WhatsApp number and a back-up number. Protests and requests for redress shall be delivered there within the appropriate time limit.

17.3 Parties will be informed by WhatsApp as soon as possible after the Protest Time Limit to inform competitors of hearings in which they are parties or named as witnesses. Notices of Protests by the Race Committee, Technical Committee or Protest Committee will be posted to inform boats.

18 SCORING

18.1 Three (3) races are required to be completed to constitute a series.

18.2 When fewer than four (4) races have been completed, a boat's series score will be the total of her race scores.

18.3 When four (4) or more races have been completed, a boat's series score will be the total of her race scores, excluding her worst score.

19 SAFETY REGULATIONS

19.1 [DP] A boat that retires from a race shall notify the race committee at the first reasonable opportunity.

20 REPLACEMENT OF CREW AND EQUIPMENT

20.1 [DP] Substitution of equipment is not allowed unless authorised in writing by the race committee. Requests for substitution shall be made to the race committee at the first reasonable opportunity, which may be after the race.

20.2 Substitution of competitors is not allowed without prior written approval of the race committee.



21 EQUIPMENT AND MEASUREMENT CHECKS

- 21.1 A boat or equipment may be inspected at any time for compliance with class rules, notice of race and sailing instructions.
- 21.2 [DP] When instructed by a Race Official on the water, a boat shall proceed to a designated area for inspection.

22 SUPPLIED BOATS - *Not Used.*

23 OFFICIAL VESSELS - *Not Used.*

24 [DP] SUPPORT TEAMS & SUPPORT VESSELS (SPVS)

- 24.1 [DP] During racing SPVs shall remain more than 100 metres from the course area, except when asked to assist by the Race Committee. **SPV's shall not create a wake** that interferes with a boat racing.

25 TRASH DISPOSAL

- 25.1 The Event is a 'Clean Regatta' and is fully supportive of sustainability of our land and marine environments. We would ask that you try to eliminate any plastic disposable bottles or wrapping in your consumables on board and to recycle any necessary plastic when ashore.

26 BERTHING

- 26.1 Launching and berthing are included in the entry fee and will take place as set out in paragraph 6 above. Lift out facilities for visiting boats will be provided as soon as practical.
- 26.2 All boats are required to be berthed overnight on LRYC designated moorings or jetties (Competitors are advised to use adequate warps and fenders.)

27 HAUL-OUT RESTRICTIONS

- 27.1 [DP] Boats shall not be hauled out during the event except with and according to the terms of prior written permission of the race committee.

28 DIVING EQUIPMENT AND PLASTIC POOLS - *Not Used.*

29 PRIZES

- 29.1 Prizes will be given to the first 3 boats Overall and to the first boat in the Silver Fleet. Other prizes may be awarded at the absolute discretion of the OA.



30 RISK STATEMENT

30.1 RRS 3 of the Racing Rules of Sailing states: 'The responsibility for a boat's decision to participate in a race or to continue racing is hers alone.'

Sailing is by its nature an unpredictable sport and therefore inherently involves an element of risk. By taking part in the event, each competitor agrees and acknowledges that:

- (a) They are aware of the inherent element of risk involved in the sport and accept responsibility for the exposure of themselves, their crew and their boat to such inherent risk whilst taking part in the event;*
- (b) They are responsible for the safety of themselves, their crew, their boat and their other property whether afloat or ashore;*
- (c) They accept responsibility for any injury, damage or loss to the extent caused by their own actions or omissions;*
- (d) Their boat is in good order, equipped to sail in the event and they are fit to participate;*
- (e) The provision of a race management team, patrol boats and other officials and volunteers by the event organiser does not relieve them of their own responsibilities;*
- (f) The provision of patrol boat cover is limited to such assistance, particularly in extreme weather conditions, as can be practically provided in the circumstances;*
- (g) It is their responsibility to familiarise themselves with any risks specific to this venue or this event drawn to their attention in any rules and information produced for the venue or event and to attend any safety briefings.*

30.2 LRYC and SB20 Ireland, together with their officers, members, volunteers, event sponsors and patrons will not accept liability for the loss of life or property, or personal injury, or damage caused by or arising out of the SB20 Midland Championship 2025, including any pre-championship training at the championship site. Competitors take part in the event entirely at their own risk.

30.3 The establishment of the NoR and the SIs and any other event notices, in no way limits or reduces the complete and unlimited responsibilities of competitors being solely and entirely responsible for the management of a boat they are sailing.
Participating in a race or to continue racing is the responsibility of each competitor (See RRS 3).

31 INSURANCE

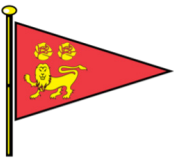
31.1 Each participating boat shall be insured with valid and adequate insurance against any risk, including civil responsibility to third parties for the entire event. Certificate of insurance may be required by the race office.

31.2 By completing the entry form Owners / Competitors are deemed to have declared that they hold such cover.

31.3 Owners / competitors not holding such cover shall withdraw their entry.

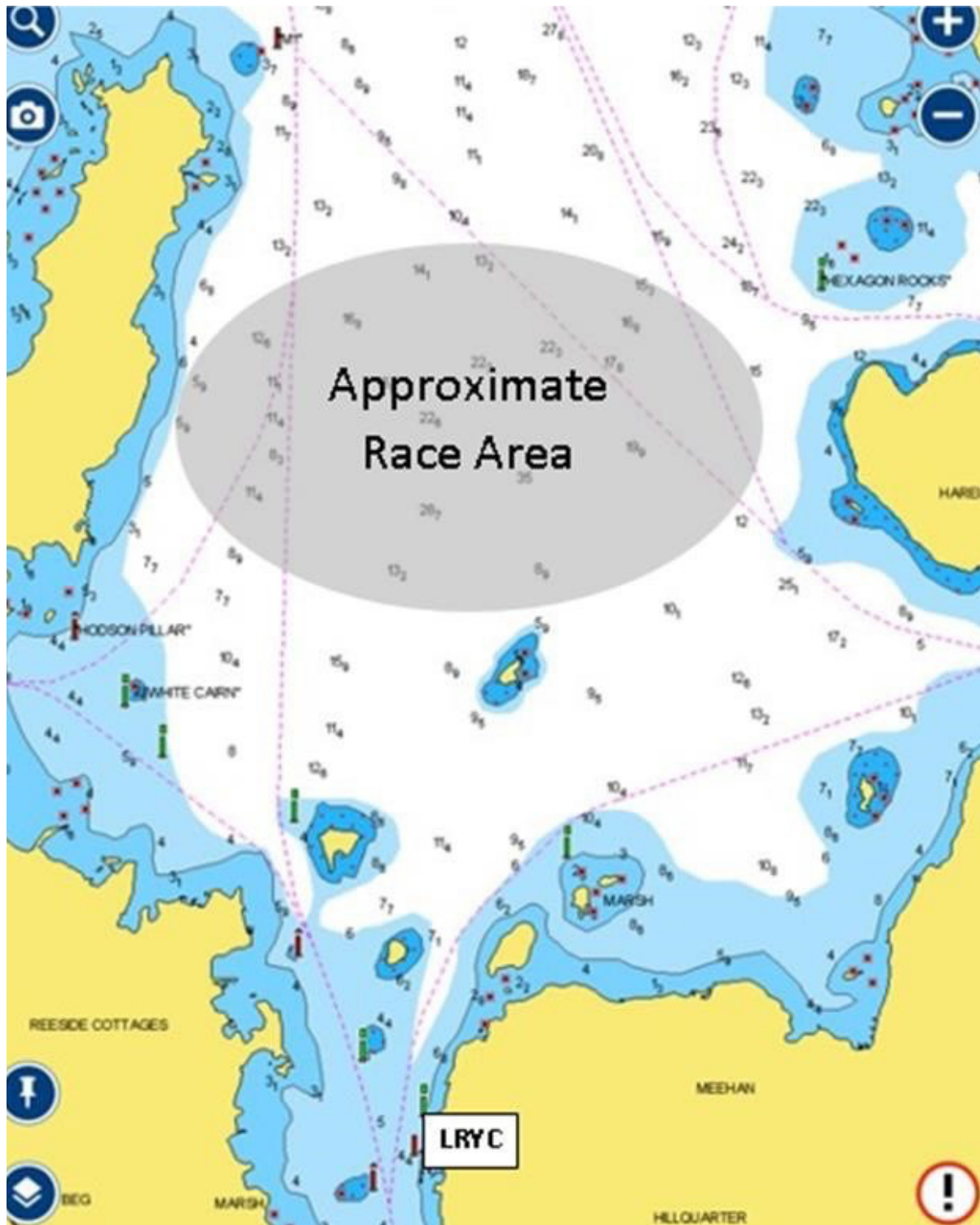
32 MEDIA RIGHTS

32.1 Competitors automatically grant to the OA, without payment, the right in perpetuity to make use of and show any motion pictures, still pictures and live, taped or filmed television of or relating to the event. This may include the use of unmanned aerial vehicles (drones) operated under IAA guidelines.



ADDENDUM A

The distance from LRYC to the starting area may be up to **three kilometers**



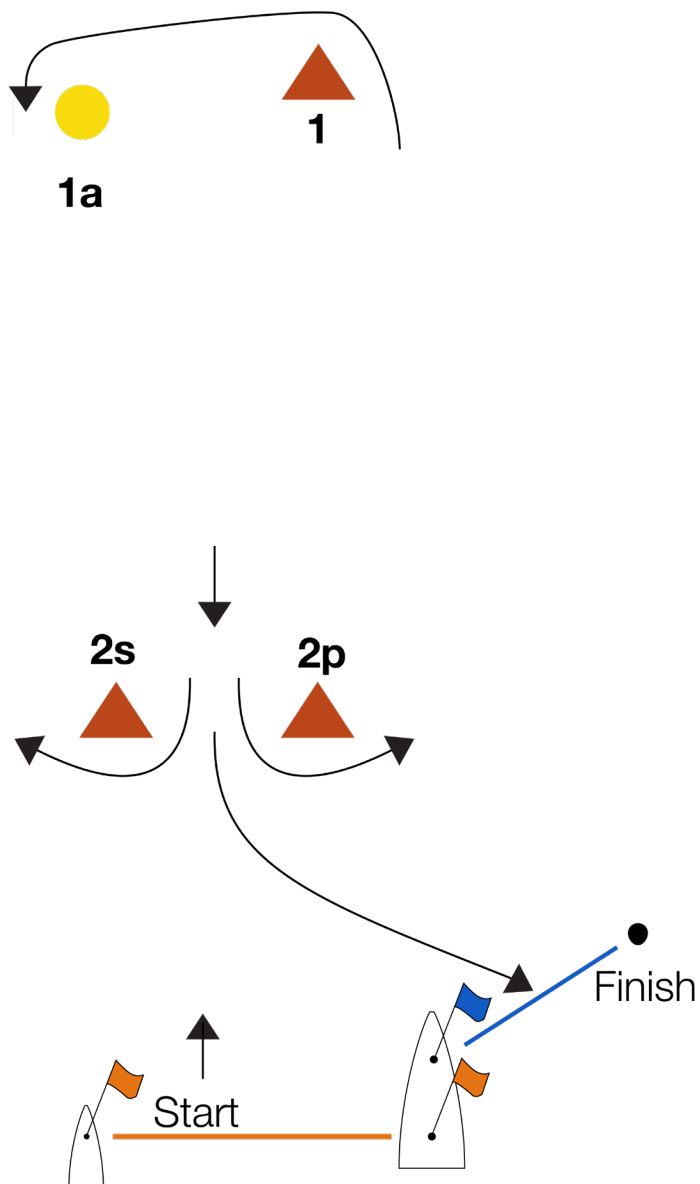


ADDENDUM B

COURSE

Mark Rounding Order

START - 1 - 1a - 2s/2p - 1 - 1a - 2p - FINISH



NOT TO SCALE

END OF SIs