



International j/24 Class  
EASTERN Championships 2026  
Lough Ree Yacht Club

20th & 21st June 2026

The Organising Authority (OA) is  
Lough Ree Yacht Club (LRYC)  
*In conjunction with The International j/24 Class Association of Ireland.*

Ballyglass, Coosan, Athlone, Co Westmeath N37 K257

## NOTICE OF RACE (NoR)

*The notation '[DP]' at the beginning of a rule means that this penalty for a breach of the rule, may, at the discretion of*

*the protest committee, be less than disqualification.*

*The notation '[NP]' at the beginning of a rule means that that rule shall not be grounds for protests by a boat.  
This changes RRS 60.1.*

---



## 1 RULES

- 1.1 The event is governed by the *rules* as defined in *The Racing Rules of Sailing (RRS)*.
- 1.2 Class rule C.2.1.(b) is replaced with class rule H.4.3 which reads:  
“A crew nominated or listed for this event may be different for different days only if scheduled in advance at registration. Emergency changes may be made only with the written permission of the race committee.”
- 1.3 A spare class spinnaker may be carried subject to declaration of its colour(s) on the entry form. In the event that the primary spinnaker is damaged beyond repair afloat, the spare may be used in subsequent races. Use of the spare spinnaker must be declared by hailing the committee Start Vessel on VHF or otherwise, and receiving acknowledgement. This amends Class rule C.10.2.
- 1.4 Class Rule C.1.1., changing rule 42 is amended (prohibiting the crew hanging on mast or shrouds to promote a roll tack or gybe, and allowing all parts of a main-sheet to be pulled simultaneously)
- 1.5 Competitors please also note: Class Rule C.2.2., changing rule 49 (regulating crew position outside the upper lifeline) will apply.

## 2 SAILING INSTRUCTIONS (SIs)

- 2.1 The SIs will be available no later than 21:00 on Friday 19th June 2026 at Registration.

## 3 COMMUNICATIONS

- 3.1 The Official Notice Board is located on the Notice Window at the front of the clubhouse.
- 3.2 [DP] Copies of notices may also be published on the event WhatsApp Group which can be joined by using the link [HERE](#) or by scanning the Event QR code. Failure to post such information on WhatsApp shall not be grounds for redress. This changes *RRS* 61.4(b).
- 3.3 [DP] All boats shall carry a functioning VHF radio capable of communicating on international VHF channels. The channel to be used will be stated in the SIs.
- 3.4 On the water, the race committee may make courtesy broadcasts to competitors on VHF radio.
- 3.5 [DP] From the first warning signal until the end of the last race of the day, a boat shall not make voice or data transmissions and shall not receive voice or data communications that are not available to all boats. This includes use of mobile phones.



## 4 ELIGIBILITY AND ENTRY

- 4.1 The Regatta is open to boats registered with the International J/24 Class, whose helm or registered owners are members of a National J/24 Class Association recognised by the International J/24 Class Association.
- 4.2 Where any crew member will be under 18 years of age on 20th June, 2026 a Parent or Legal Guardian shall submit an LRYC Parental Consent Form which can be found in on-line entry or [HERE](#). Hard copies will be available at the Regatta Office.
- 4.3 Online entry is available [HERE](#).
- 4.4 Entries are accepted at the sole discretion of the OA.



## 5 FEES

5.1 Entries will be accepted until Friday 19th June with an early entry discount applicable as below. The entry fee includes launching, berthing and lift out of visiting boats and is non-refundable.

	ENTRY On or before Friday 12 <sup>th</sup> June	LATE ENTRY From Saturday 13 <sup>th</sup> June
	€130.00	€150.00
Discounted Rate for "All Under 25 Teams"	€100.00	€120.00

5.2 Lift in, lift out and berthage is included in the entry fee.

5.3 Complimentary tea, coffee, toast etc available each morning for breakfast.

6 CREW LIMITATIONS- *Not Used.*

## 7 ADVERTISING

7.1 Boats may be required to display advertising chosen and supplied by the OA.

8 QUALIFYING SERIES AND FINAL SERIES- *Not Used.*

## 9 SCHEDULE

Date	Registration, & Lift In* / Out	Briefing / Prizegiving (in front of clubhouse)	First Warning Signal	Number of Races
Fri 19 <sup>h</sup>	Lift In 15:00 - 19:00 (Registration 18:00-20:00)			
Sat 20 <sup>th</sup>	08:30 - 09:30	10:00	11:30	Up to 4
Sun 21 <sup>st</sup>	Visitors Boats Immediately After Racing	A.S.A.P. After Visitors Lift Out	11:00	Sufficient to complete Series

\* Lift in may be arranged otherwise by prior arrangement.

9.1 Six (6) races are scheduled as above.

9.2 Schedule of subsequent races will be as described in the SIs.



- 9.3 Any change to the schedule of races will be posted by 20:00 on the day before it will take effect. However, the race committee may run additional race(s) each day to pick up lost races or anticipated lost races.
- 9.4 [NP] The Target time for the first boat to finish each race will be approximately 45 minutes.
- 9.5 [NP] The Time Limit for each race will be 75 minutes.
- 9.6 On Sunday 21st June the first warning signal of a race will not be made after 14:30.

## 10 EQUIPMENT INSPECTION

- 10.1 [DP] Boats shall be available for equipment inspection upon request.
- 10.2 Boats may be inspected at any time.

## 11 CLOTHING & EQUIPMENT

- 11.1 **RRS 40.1 applies at all times while afloat. “Each competitor shall wear a personal flotation device except briefly while changing or adjusting clothing or personal equipment. Wet suits and dry suits are not personal flotation devices”.**

## 12 VENUE

- 12.1 The host club is LRYC.
- 12.2 Addendum 1 shows the location of LRYCs shore facilities.
- 12.3 Addendum 2 shows the location of the intended racing area.

## 13 The COURSES

- 13.1 The courses to be sailed will be windward/leeward. Details will be as described in the SIs.

## 14 PENALTY SYSTEM

- 14.1 The first two sentences of RRS 44.1 are changed to: “A boat may take a One-Turn Penalty when she may have broken one or more rules of Part 2 or rule 31 in an incident whilst *racing*. **However**, except at a starting mark, when she may have broken one or more rules of Part 2 while in the zone around a mark which begins, bounds, or ends a leg of the course, her penalty shall be a Two-Turns Penalty”.
- 14.2 *RRS Appendix T* (Arbitration) may apply to this event and, if so, will be further described in the SIs.
- 14.3 Other penalties may be described in the SIs.

## 15 SCORING

- 15.1 Two races are required to be completed to constitute a championship.
- 15.2 When fewer than four races have been completed, a boat’s series score will be the total of her race scores.
- 15.3 When four or more races have been completed, a boat’s series score will be the total of her race scores excluding her worst score.



## 16 SUPPORT PERSON VESSELS (SPVs)

- 16.1 [DP] SPVs shall register during scheduled registration, declaring to which boat or boats they are attached. They shall follow the instructions of the OA. They may be required to display an identification flag supplied by the OA. See also NoR 23 INSURANCE.
- 16.2 [DP] During racing SPVs shall remain more than 100 metres from the course area, except when asked to assist by the Race Committee.
- 16.3 [DP] [NP] **SPV's shall not create a wake** that interferes with a boat racing.

## 17 CHARTERED OR LOANED BOATS

- 17.1 A chartered or loaned boat may carry national letters or a sail number in contravention of her class rules, provided that the race committee has approved her sail identification before the first race. This changes *RRS G3*.

## 18 BERTHING

- 18.1 [DP] To keep the crane area clear, boats shall rig either behind the clubhouse or on the concrete pad immediately north of the clubhouse. (See NoR Addendum A - Item 9 Marquee Area).
- 18.2 [DP] Lift in, out and berthing are included in the entry fee and will take place as set out in NoR 9 above or may be available previously by arrangement
- 18.3 [DP] Trailers shall be moved to the south field immediately after launch. (See NoR Addendum A - Item 19).
- 18.4 [DP] All launched boats must be berthed overnight on Friday 19th to Saturday 20th of the event on LRYC pontoons or moorings as directed by the OA. Competitors are advised to bring adequate warps and fenders.

## 19 HAUL-OUT RESTRICTIONS

- 19.1 [DP] [NP] Boats shall not be hauled out during the event except in accordance with the prior written permission and terms of the OA. This restriction also applies to rudders.
- 19.2 Lift-out facilities for visiting boats will be provided immediately after racing on Sunday.

## 20 DIVING EQUIPMENT AND PLASTIC POOLS

- 20.1 [DP] Underwater breathing apparatus and plastic pools or their equivalent shall not be used between the time the boat is afloat and the end of the event. The hull may be cleaned at any time by swimming or keelhauling using ropes, cloth or other equipment designed for that use.
- 20.2 [DP] Careening by any means for the purpose of cleaning or inspecting the hull is prohibited during the event.
- 20.3 [DP] The use of dehumidifiers or electric fans are prohibited at all times while boats are afloat.



## 21 DATA PROTECTION

21.1 Any personal information provided to the OA will be used to facilitate participation in the Event. Competitors and support persons are bound by the RRS (the rules), the legal basis for processing that personal information is contract. For any person not bound by the rules, the legal basis for processing that personal information is legitimate interest.

Personal information will be stored and used in accordance with the OA's privacy policy.

When required by the rules, personal information may be shared with Irish Sailing, a competitor's or support person's national authority and/or World Sailing. The results of the Event and the outcome of any hearing or appeal may be published.

Competitors and support persons accept that the OA may arrange for images or videos to be taken at the Event both on the water and on shore. Competitors and support persons give consent to the taking of such images and to the use, reuse, publication and republication of such images in any media, in conjunction with the competitor's name or not, without compensation and without the competitor's approval of such images or any use thereof. The images may only be used for the promotion of the Event, its sponsors, the OA and the Class associations.

21.2 The OA will use personal data to administer the event.

## 22 RISK STATEMENT

22.1 RRS3 of the Racing Rules of Sailing states: ***'The responsibility for a boat's decision to participate in a race or to continue racing is hers alone'***.

*Sailing is by its nature an unpredictable sport and therefore inherently involves an element of risk. By taking part in the event, each competitor agrees and acknowledges that:*

- (a) They are aware of the inherent element of risk involved in the sport and accept responsibility for the exposure of themselves, their crew and their boat to such inherent risk whilst taking part in the event;*
- (b) They are responsible for the safety of themselves, their crew, their boat and their other property whether afloat or ashore;*
- (c) They accept responsibility for any injury, damage or loss to the extent caused by their own actions or omissions;*
- (d) Their boat is in good order, equipped to sail in the event and they are fit to participate;*
- (e) The provision of a race management team, patrol boats and other officials and volunteers by the event organiser does not relieve them of their own responsibilities;*
- (f) The provision of patrol boat cover is limited to such assistance, particularly in extreme weather conditions, as can be practically provided in the circumstances;*
- (g) It is their responsibility to familiarise themselves with any risks specific to this venue or this event drawn to their attention in any rules and information produced for the venue or event and to attend any safety briefings.*

22.2 LRYC and The International J/24 Class Association of Ireland, together with their officers, members and volunteers, will not accept liability for the loss of life or property, or personal injury, or damage caused by or arising out of the J/24 event, including any pre-championship training at the championship site, and competitors take part in the championship entirely at their own risk.



## 23 INSURANCE

- 23.1 Each participating boat and SPV shall be insured with valid and adequate insurance against any risk, including civil responsibility to third parties for the entire event.
- 23.2 Certificate of insurance may be required at registration.
- 23.3 By completing the entry form all Owners / Competitors are deemed to have declared that they hold such cover.
- 23.4 Owners / competitors not holding such cover shall withdraw their entry.

## 24 PRIZES

- 24.1 The International J/24 Class of Ireland will provide First place perpetual trophies for both the Gold and Silver Fleets.
- 24.2 Other prizes may be awarded at the discretion of the OA.

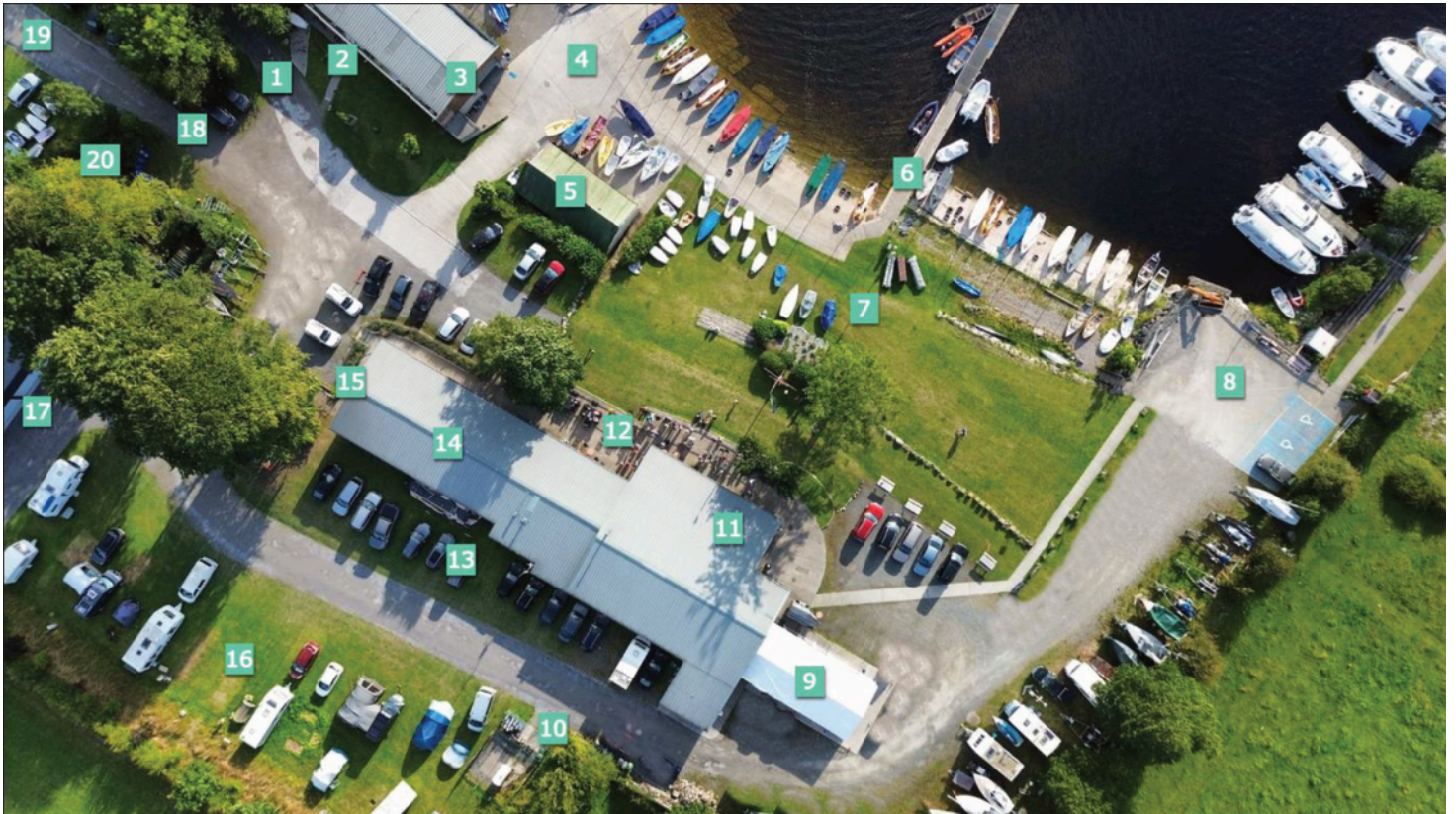
## 25 FURTHER INFORMATION

- 25.1 Visiting helm and crews, together with their guests competing in the event, are granted Temporary Membership of LRYC for the duration of the event, subject only to the provisions of the Club rules for withdrawing or withholding such membership.
- 25.2 For further information, please contact Cillian Dickson at 0851241857 or email [cillandickson@hotmail.com](mailto:cillandickson@hotmail.com).



aDDENDUM A

## Lough Ree Yacht Club – Site Map



8. Crane/Set down area for Jetty

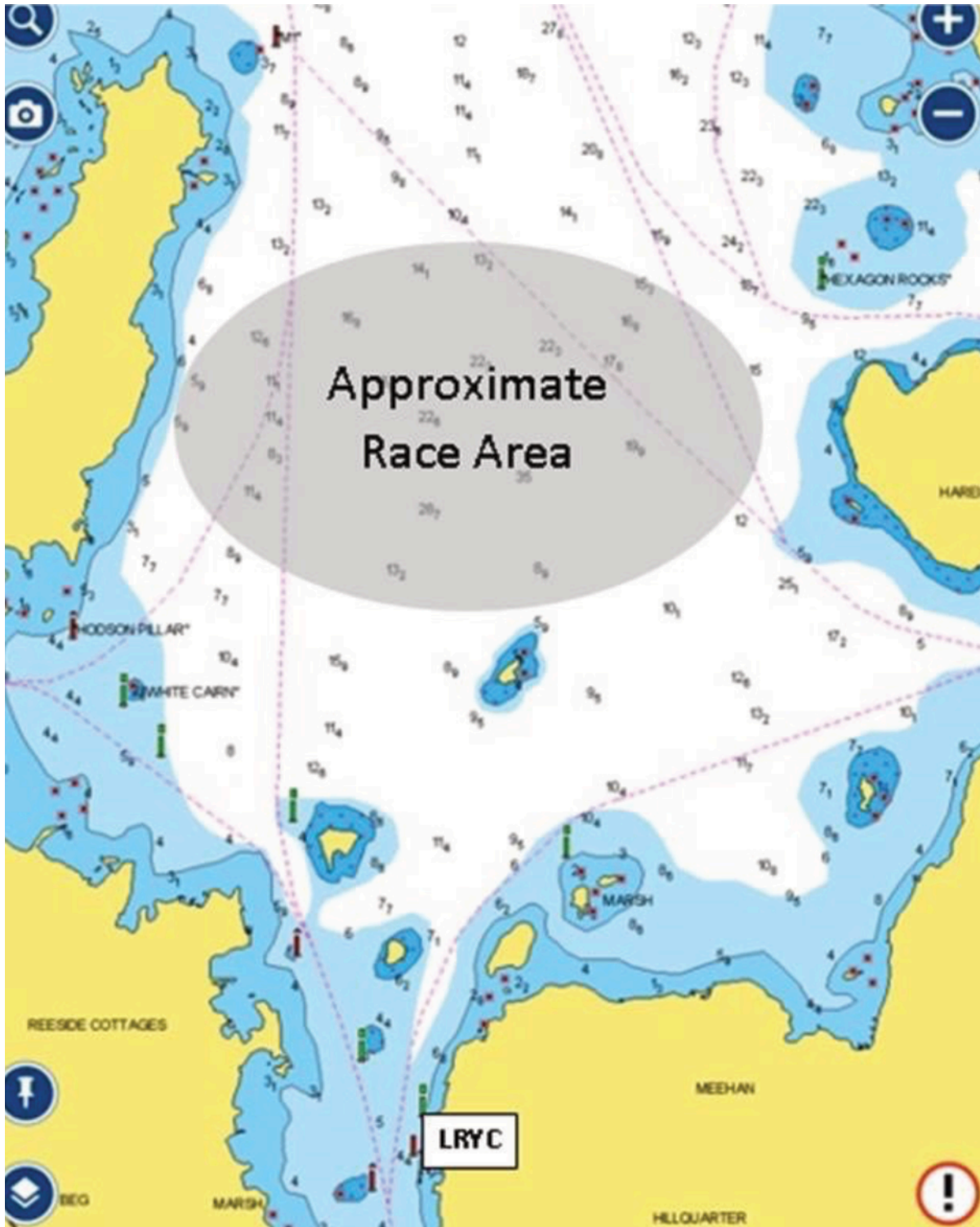
20. Recycling and General Waste

A1 Club facilities include power & water on site, shower & changing facilities and trailer storage during the event.

A2 Camping and caravan parking available on site.



aDDENDUM B



END OF NOTICE OF RACE



## ACCOMMODATION

Competitors are welcome to camp on the LRYC grounds for the duration of the event.  
Parking for Camper Vans, Tents etc. with shower facilities available.

**Weekend camping charge of €50.00 per Camper Van / Caravan and €30.00 per tent  
applies and can be booked [HERE](#).**

## CATERING

### Saturday Evening 20th June

A championship dinner will take place in the LRYC clubhouse at 19:00hrs.  
Tickets must be pre-booking online with your entry.  
If not booked with entry it will be necessary to book online [HERE](#)  
in advance as places may become limited.



*\*Vegatarian option available on request.*

**Price €30.00**

Final booking for meals to be received no later than Tuesday 16th of June.

**The Club Bar will be open on Friday evening from 18:30,  
and Saturday from 16:00 to close.**